

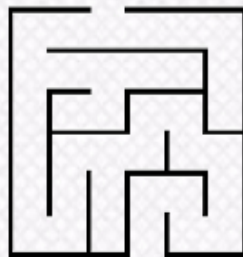
Digital Control of CE 151 Ball & Plate Model

author: Lubos Spacek

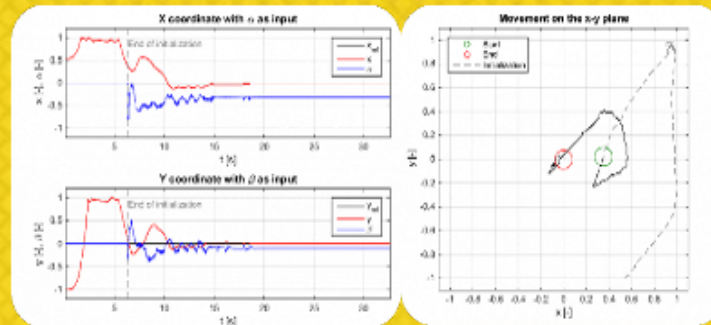
supervisor: prof. Ing. Vladimír Bobál, CSc.

Motivation:

- real-time digital control of unstable process with 2 degrees of freedom
- navigating an arbitrary maze created on the plate
- extending the possibilities of the model for educational purposes



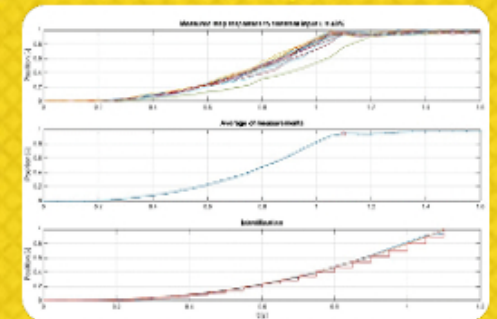
Real model control results



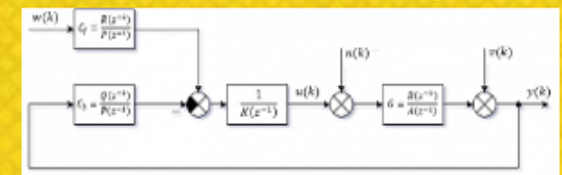
Maze path determination using watershed transform



Identification process



2DOF LQ controller design



Real model maze navigation

