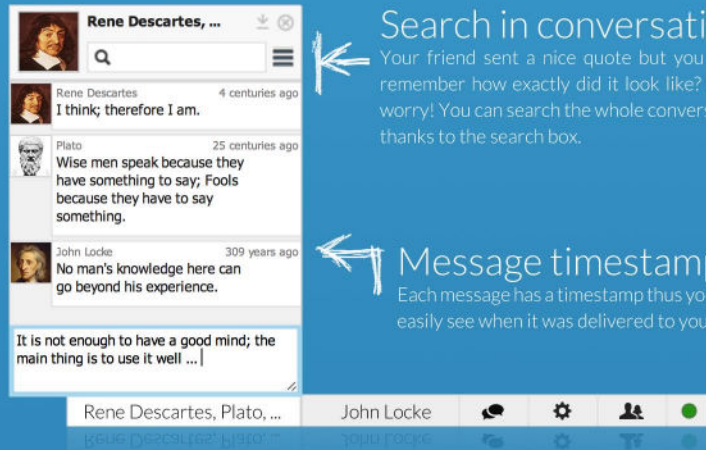


Liferay Communication Infrastructure



Multi user support

Don't like to chat alone? You don't have to! You may add as many users you want!



Search in conversation

Your friend sent a nice quote but you don't remember how exactly did it look like? Don't worry! You can search the whole conversation thanks to the search box.

Message timestamp

Each message has a timestamp thus you can easily see when it was delivered to you.

The main focus of this project is to create a modern instant messaging communication system in the environment of a Liferay portal (LIMS).

The project also provides a platform which visualizes connections between participants and thus shows interesting social patterns that can be used for a variety of different purposes such as Social Network Analysis.

LIMS is a part of the emerging Czech Technical University Information System. It is also a part of the Liferay marketplace and thus distributed among a large group of Liferay portal instances.

The project won a runner-up price in the Liferay marketplace app contest.

☐ Liferay Portal

Liferay is an independent market leader in the portal industry. Portal might be described as a single web-based environment from which all of a user's applications can run. Liferay is thus a container for small applications called portlets that encapsulate functionality. These applications are integrated together in a consistent and systematic way. Liferay possess their own marketplace with portlets similar to Google Play and the Apple App Store.

💬 Instant Messaging System

As a part of this project a portlet for Instant Messaging was created (the figure above). Given portlet serves as a client to the Jabber server which stores all data such as conversations and information about users.

📊 Social Network Analysis

Social network analysis is defined as a: "tool that can be used to analyze the structure of interpersonal relationships within a group of individuals. These relationships, taken collectively, constitute a network. SNA treats individuals as nodes and the relationship between individuals as linkages". The project includes a platform which provides data for SNA in a standardized Gexf format. Given data can be then easily visualized (the figure on the right).

🔗 University IS Integration

LIMS is integrated to the emerging Czech Technical University Information System. It aims to be a frequently used channel that will connect multiple groups like students, teachers, employees and alumni.

